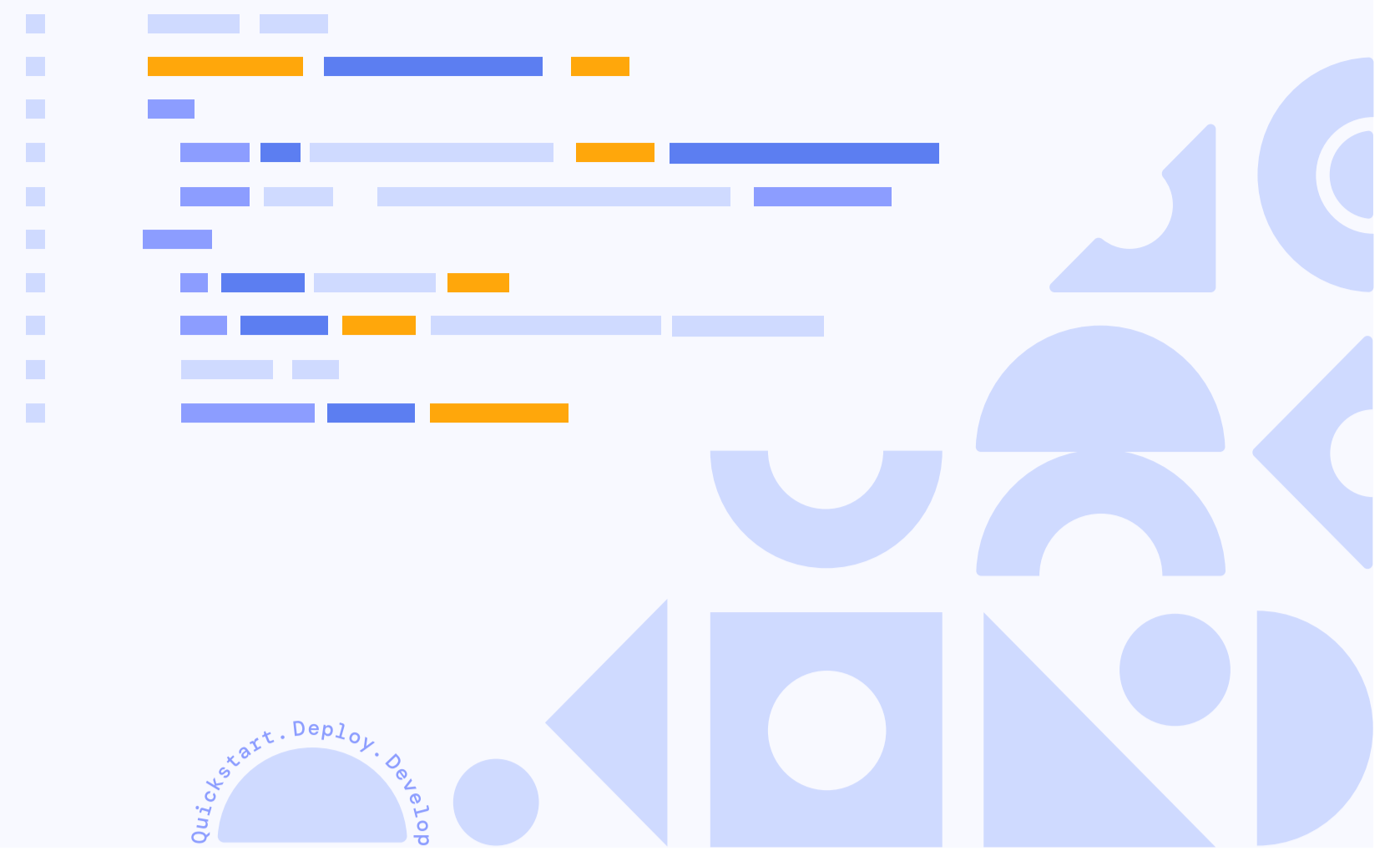




Web and Mobile Applications and Templates built around Javascript ecosystem



About

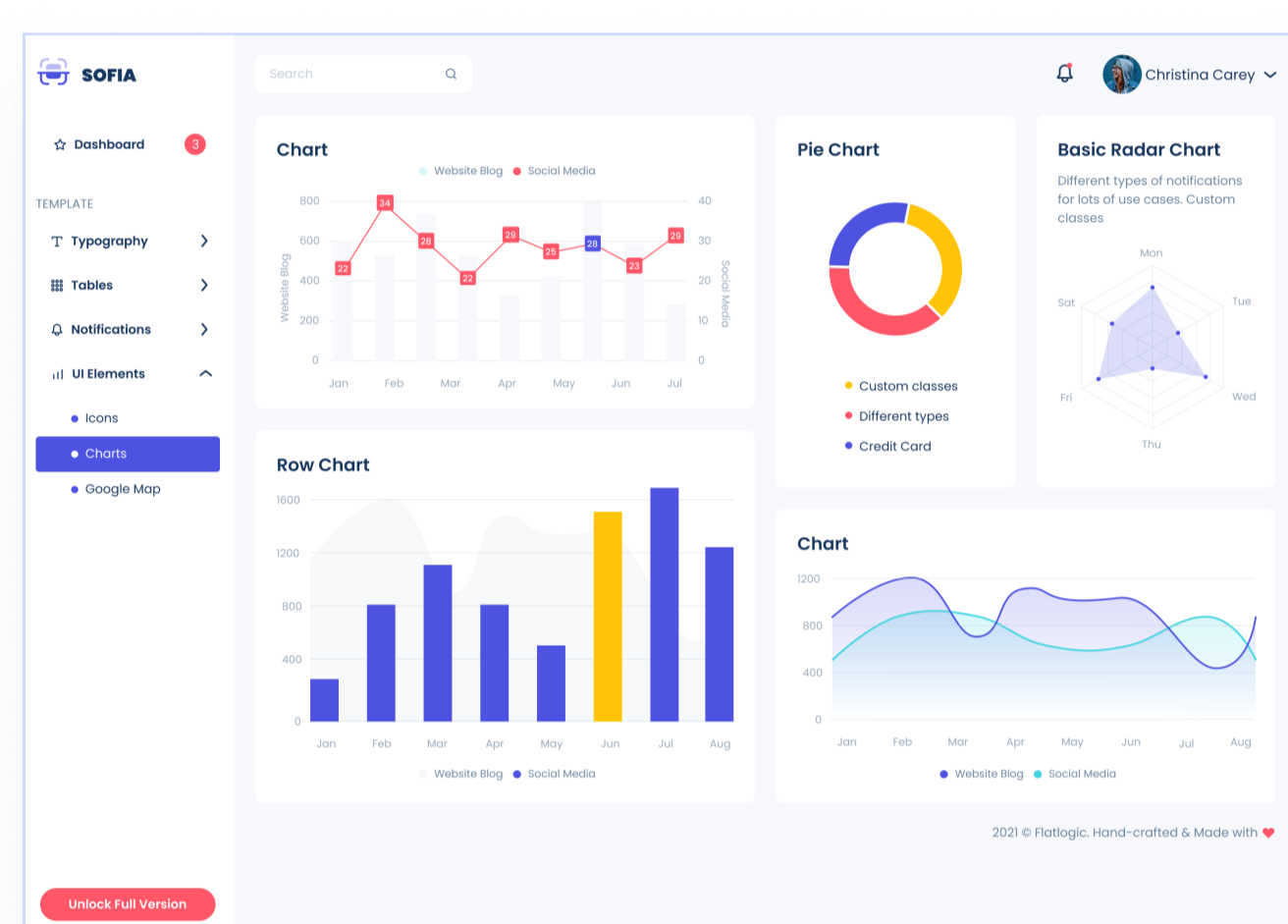
Flatlogic is the best and the fastest way to develop a web app. We have our own variety of products for faster web application development.

The company develops custom web and mobile applications for small and medium-sized businesses based on our products.

Core competencies

- **Web App Development** : React , Angular, Vue, Node.js
- **Mobile development**: React Native
- **UX and UI design** of web and mobile applications

Products



[See all Products](#)

Flatlogic platform

Flatlogic is a completely new approach in web application development. Easily create full-stack React, Vue, Angular applications in just 3 steps!

Sing App React Template

Sing App React Template is a dashboard template built with React and Node.js. Sing App goes beyond usual admin templates and provides you with an entire intuitive programming framework.

React Material Admin

React Material Admin is an easily customizable dashboard template built with Material-UI framework. It will be a great start to build your eCommerce, SaaS, project management and other web applications.

Clients

<https://clutch.co/profile/flatlogic>

Optelos is the leading enterprise drone data management and AI analytics platform built on top of Flatlogic's Sing App Dashboard.

Antibex is Clinic Management System for Healthcare Providers and Admin Staff. Technologies used: Angular and Java.

Rezbot is a booking management system built on top of Sing App Angular version with the features specifically designed for activity centers and sports instructors.

SC-Networks GmbH is an email provider and the manufacturer of EVALANCHE web-based email marketing solution based on Light Blue Admin Dashboard.



How to start a project with us

Before we start a project, we usually discuss 4 main questions:

01 Specification and description

Provide us with a description of your project. What do you expect from us? Which competencies do you need? Will there be a specification of features?

02 Time effort

When do you want to start the project? How long do you need us? Full time or part time?

03 Project management

How do we receive tasks from you? Will there be any project management from your side?

04 Legal stuff, payments and price

We sign a contract and an NDA with you. You will need to pay at the end of each month for the previous month. The rate is usually \$50-\$60 (€45 - €55) depending on your project scope and currency preferences.

Prepayment is 15-20% of the initial project estimation.



Contact us



Flatlogic, LLC.
+1 (650) 265-0317
contact@flatlogic.com
www.flatlogic.com

Philip Daineka
CEO
philip@flatlogic.com

Eugene Stepnov
COO
eugene@flatlogic.com